



# Developing a net zero emission neighborhood in Porter Ranch and surrounding communities

Mayor Garcetti's Office of Sustainability  
City of Los Angeles  
March 2016

# Contents

**I. Why are we doing this?**

**II. Policy context: Los Angeles Sustainable City pLAn**

**III. What would a net zero emission neighborhood look like?**

**IV. Potential component parts for a net zero emission neighborhood**

**V. Listening to the community**

# Why are we doing this?

- Given particular impacts of Aliso Canyon on Porter Ranch and surrounding areas, the community want to ‘turn lemons into lemonade’
- Mayor raised possibility of creating LA’s first net zero emission neighborhood in Porter Ranch and surrounding area
- As we develop the concept we will be guided by the following principles:
  1. Restore pride in the neighborhood(s);
  2. Improve home values;
  3. Improve public spaces, infrastructure and community facilities; and
  4. Reduce energy and water costs as well as dependency on natural gas
- This proposal would be separate and in addition to any individual settlements homeowners and businesses may receive.
- Need your help to demonstrate widespread community support and ensure mitigation spending gets used in the affected neighborhoods wherever possible.

# Contents

I. Why are we doing this?

II. Policy context: Los Angeles Sustainable City pLAn

III. What would a net zero emission neighborhood look like?

IV. Potential component parts for a net zero emission neighborhood

V. Listening to the community

# What is the pLAN?

A roadmap for a Los Angeles that is environmentally healthy, economically prosperous, and equitable in opportunity

An action plan that sets short-term and long-term sustainability goals, strategies, and initiatives for the City

Also provides a framework of measures and initiatives we can apply as part of an ultra low emission neighborhood



# What is the pLAn?

## ENVIRONMENT



Local Water



Local Solar



Energy-Efficient Buildings



Carbon & Climate Leadership



Waste & Landfills

## ECONOMY



Housing & Development



Mobility & Transit



Prosperity & Green Jobs



Preparedness & Resiliency

## EQUITY



Air Quality



Environmental Justice



Urban Ecosystem



Livable Neighborhoods

Lead By Example



# Contents

I. Why are we doing this?

II. Policy context: Los Angeles Sustainable City pLAn

III. What would a net zero emission neighborhood look like?

IV. Potential component parts for a net zero emission neighborhood

V. Listening to the community

# What would a Net Zero Neighborhood look like?

- Aiming to be **net zero**, to enhance connectivity, improve livability, protect the community and create a cleaner environment.
- Net zero means the total amount of energy used by all the buildings on an annual basis is roughly equal to the amount of renewable energy created in that area.
- To become net zero need to address major emission sources, energy use and seize efficiency opportunities.
- Four key 'spaces' – but can pick and choose to reflect priorities of community and local opportunities:

Home

Transport

Business / retail

Community  
assets and  
green  
infrastructure

- Crucially, process must be community driven. Need to encourage local stewardship, neighborly bonds and cultural relevance.



# Contents

I. Why are we doing this?

II. Policy context: Los Angeles Sustainable City pLAn

III. What would a net zero emission neighborhood look like?

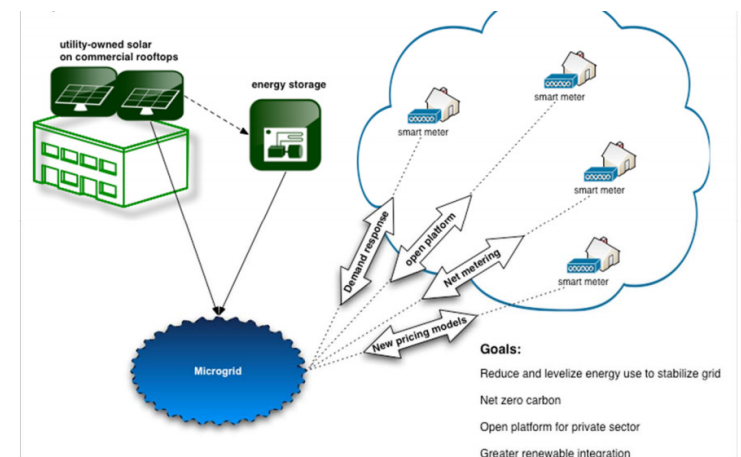
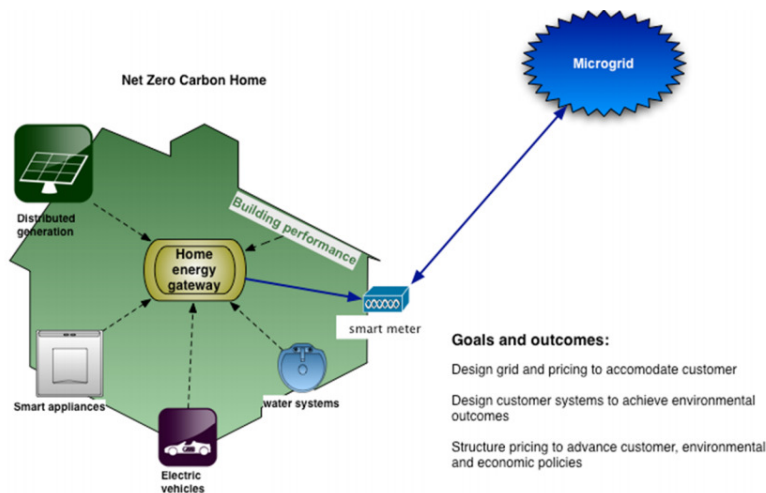
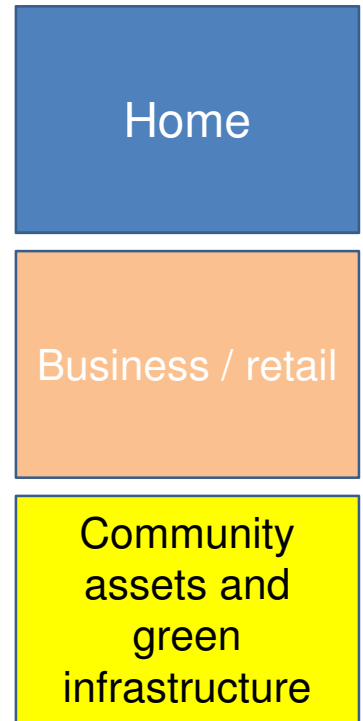
IV. Potential component parts for a net zero emission neighborhood

V. Listening to the community

# Building measures

Potential options:

- Whole building retrofit for energy/water efficiency, e.g. insulation, LEDs, automatic switching etc
- Home energy gateway linked to utility micro grid
- Utility-scale batteries for energy storage
- Smart electric appliances (rather than gas)
- Solar hot water heater / HVAC
- Solar on rooftops
- Electric vehicle charging infrastructure



# Transport measures

Transport

Potential options:

- Enhanced fast-charge EV infrastructure
- Priority access / parking for electric vehicles
- Promotion of servicing by electric vehicles
- Priority for zero emission municipal fleet vehicles (e.g. buses, garbage trucks)
- Electric car sharing



# Example 1: Greening

Community  
assets and  
green  
infrastructure

Potential options:

- New pedestrian / cycling friendly routes and thoroughfares
- New green spaces
- Green alleys
- Green roofs
- Green walls
- Sidewalk vegetable boxes
- Strategically located trees, shrubs and plants to shield sidewalks from pollution



# Example 2: Schools

Community  
assets and  
green  
infrastructure

Potential options:

- New 'citizen science' education programs focused on impacts of air pollution and using the Aliso Canyon gas leak as a 'teachable moment'
- Strategically located trees, shrubs and plants to shield schools from pollution
- Improved ongoing air quality monitoring at schools



# Key opportunities

## Neighborhoods

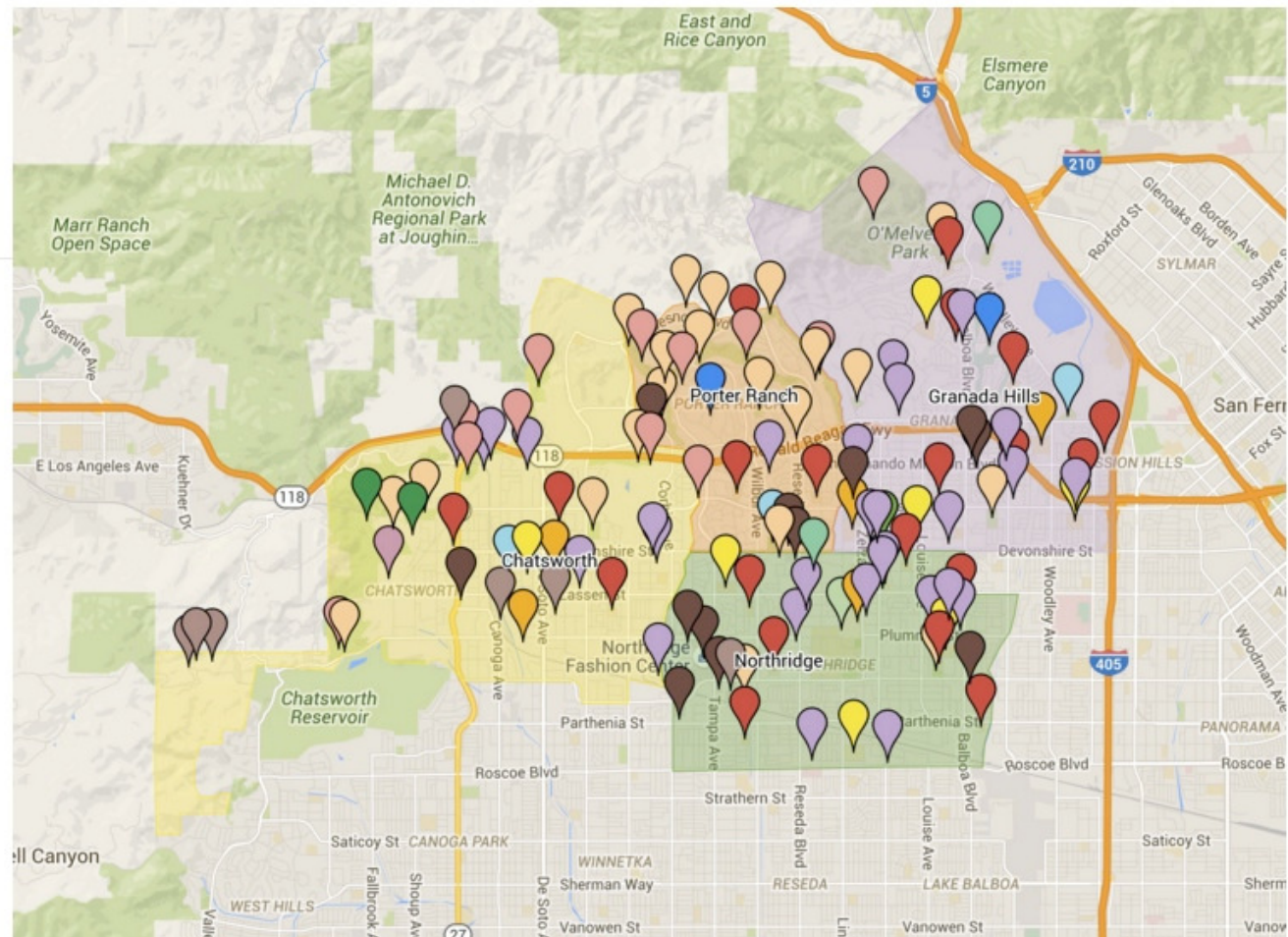
- Chatsworth
- Granada Hills
- Northridge
- Porter Ranch

## Public Places

- Private and Charter Schools
- Regional Parks & Gardens
- Public Elementary Schools
- 

## Natural Areas & Wildlife Sanctuaries

- Shopping Centers
- Mobile Home Parks
- Public Middle Schools
- Public High Schools
- Sports Complexes
- Golf Courses
- Historical Parks
- Recreation Centers
- Cemeteries



# Contents

I. Why are we doing this?

II. Policy context: Los Angeles Sustainable City pLAn

III. What would a net zero emission neighborhood look like?

IV. Potential component parts for a net zero emission neighborhood

V. Listening to the community

# Listening to the community

- We want to hear from community about your priorities for your neighborhoods.
- Questionnaire available until end Monday March 14<sup>th</sup>
- Questionnaire available by email and at <http://goo.gl/forms/AKW32JTP>
- Questionnaire looks at building measures you would like as a resident or business; transportation measures; green infrastructure and air quality monitoring.
- In addition, we really want people to identify important community assets like schools or libraries.

## Net Zero and Ultra Low Emissions Neighborhood Survey

The Aliso Canyon Gas Leak has had a devastating effect on Porter Ranch, Chatsworth, Granada Hills and Northridge. Mayor Eric Garcetti and his team have explored with the community the possibility of using a proportion of any settlement funding to create LA's first net zero energy\* and ultra low emission neighborhood. Any program of this type would be separate and in addition to any individual settlements homeowners and businesses may receive.

As we develop the concept of a net zero energy and ultra low emission neighborhood we will be guided by the following principles:

1. Restore pride in the neighborhood(s);
2. Improve home values;
3. Improve public spaces, infrastructure and community facilities; and
4. Reduce energy and water costs as well as dependency on natural gas

To ensure that any proposal fully reflects the priorities and concerns of the local communities involved we want to canvass your views on what a net zero energy and ultra low emission neighborhood should include and where it should be focused. We would be grateful if you could complete the below questionnaire by the end of Monday March 14th, 2016.

Thanks for taking the time to share your thoughts!

Mayor Garcetti's Office of Sustainability

\* What is a net zero energy community? It means the total amount of energy used by all the buildings on an annual basis is roughly equal to the amount of renewable energy created in that area.

1. Please provide your name

Your answer

2. Please provide your address

Your answer

3. Please provide your email address

Your answer

4. Please provide your phone number

Your answer